

BIO & PACHY METER AL-4000

POCKET SIZE BIO / PACHY METER

DELIGHT IN SIGHT

Compact design.
Easy to use.
Simply indispensable.



- Wireless communication
- Axial length + corneal thickness
- Compact body
- Rechargeable battery with AC adapter
- Multiple IOL power calculation
- A-scan diagnostic probe (optional)
- Integrated database software (TB-1000)
- Contact + immersion mode

 **TOMEY**
TECHNOLOGY AND VISION

TOMEY BIO / PACHYMETR AL-4000

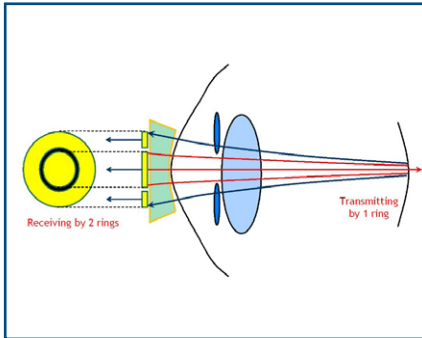


QUALITY IN DETAIL

This extremely handy and easy-to-use combination of Bio and Pachymeter leaves nothing to wish for in terms of comfort and flexibility. Wireless communication plus the fully integrated IOL power calculation software allow for using the complete setup of the handheld device **AL-4000** on the PC.



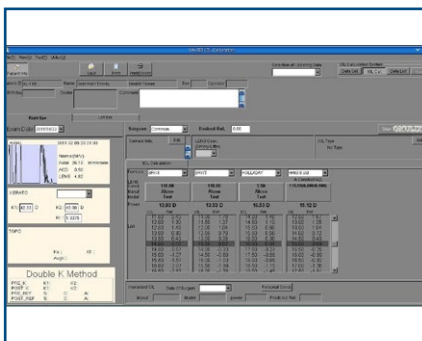
Just dock your AL-4000 to the A/B scanner UD-8000 and you have the ultimate ultrasound workstation.



Latest probe technology helps to make results even more reliable and very fast.



Connectable to Laptop or PC wireless or USB.



Full IOL power calculation software.

SPECIFICATIONS

BIOMETRY (A-SCAN)

Probe

Type	Solid state (immersion option)
Fixlight	Built in the probe, red LED
Transducer frequency	10 MHz
Tip diameter	6.00 mm Ø (concave)
Dimension / Weight	14.0 mm Ø x 98 mm / 40 g

Probe modes

Contact, immersion

Measurement modes

Automatic	Hand-held, chin rest
Manual	Foot switch

Eye modes

Normal & dense cataract, aphakic, pseudophakic (silicone, acrylic & PMMA)

Measurement range

Axial length	13.00 to 45.00 mm
ACD	1.80 to 7.00 mm
Lens thickness	2.00 to 6.00 mm
Accuracy	±0.1 mm
Resolution	0.01 mm

IOL calculation formulas

Main Unit	SRK/T
PC kit	SRK/T, SRK II, Holladay, Haigis (optimised, standard), Showa, double K SRK/T

PACHYMETRY

Probe

Type	Solid state (disposable tip option)
Transducer frequency	20 MHz
Tip diameter	1.5 mm Ø with an angle of 45° (flat)
Dimension / weight	8.8 mm Ø x 90 mm / 30 g

Bias setting range

60-130 % and -600 - +450 µm

Measurement range

150 - 1550 µm (accuracy ±5 µm, resolution 1 µm)

A-SCAN DIAGNOSIS (INCL. PEAK DIFFERENTIAL MODE)

Probe

Type	Solid state
Transducer frequency	10 MHz
Tip diameter	5 mm Ø (flat)
Dimension / Weight	8 mm Ø x 97 mm / 30 g

MAIN UNIT

Display	3.5" TFT colour LCD touch screen
Dimension (WxDxH)	109 x 52 x 166 mm
Weight	470 g

AC adapter

Voltage	100-120 V / 220-240 VAC
Frequency	50 / 60 Hz
Power consumption	10 / 12 VA
Battery	Lithium-ion rechargeable battery

2017/08 - subject to change without notice



TOMEY EUROPE
TOMEY GmbH
 Wiesbadener Straße 21
 90427 Nürnberg, Germany
 Phone +49 911 938 546 2 0
 Fax +49 911 938 546 2 20
 Email info@tomey.de

TOMEY ASIA-PACIFIC
TOMEY CORPORATION JAPAN
 2-11-33 Noritakeshinmachi
 Nishi-ku, Nagoya 451-0051, Japan
 Phone +81 52 581 5327
 Fax +81 52 561 4735
 Email intl@tomey.co.jp

TOMEY
 TECHNOLOGY AND VISION

www.tomey.de